



Delightful and well presented semi-detached family home, ideally located at Huntingdon Place, within the Tynemouth Village Conservation Area. Huntingdon Place which is perfectly situated close to the Village Green and is within walking distance to everything Tynemouth has to offer including Tynemouth Castle & Priory and is a stones-throw from Tynemouth Metro Station providing easy access into Newcastle City Centre and beyond.

The accommodation briefly comprises: entrance lobby through to entrance hall with with storage cupboard and under-stairs WC; sitting room with Parquet flooring, feature fireplace, fitted alcove storage and French doors leading out to the rear garden, open to dining room with Parquet flooring, walk in bay and fitted alcove storage; 18ft kitchen with a range of fitted units, work surfaces, spot lighting and French doors out to the rear garden. The first floor landing gives access to; three bedrooms, bedrooms one and two both comfortable doubles with fitted wardrobe storage and bedroom one with walk in bay; family bathroom with three piece suite, spot lighting and dual aspect windows.

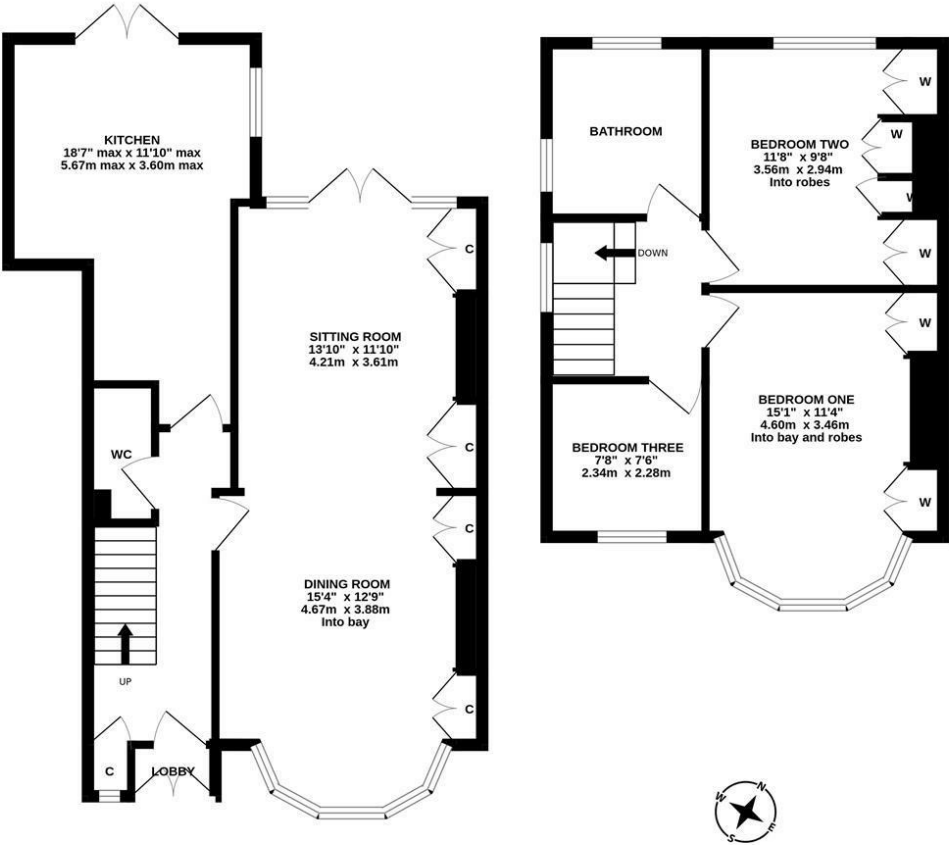
Externally, a block paved front driveway providing off-street parking and to the rear, a delightful enclosed garden laid mainly to lawn with an array of flower and shrubs together with a pathway leading to a pleasant patio seating area. A great purchase opportunity not to be missed, early viewings are advised.

Delightful Semi-Detached Family Home | 1,074 Sq ft (99.8m2) | Three Bedrooms | Sitting Room to Dining Room | Kitchen | Downstairs WC | Family Bathroom | Front Driveway | Enclosed Rear Garden | Well Presented | Excellent Location | Freehold | Council Tax Band D | EPC: D



GROUND FLOOR
618 sq.ft. (57.5 sq.m.) approx.

1ST FLOOR
456 sq.ft. (42.4 sq.m.) approx.



TOTAL FLOOR AREA: 1074 sq.ft. (99.8 sq.m.) approx.

Whilst every attempt has been made to ensure the accuracy of the floorplan contained here, measurements of doors, windows, rooms and any other items are approximate and no responsibility is taken for any error, omission or mis-statement. This plan is for illustrative purposes only and should be used as such by any prospective purchaser. The services, systems and appliances shown have not been tested and no guarantee as to their operability or efficiency can be given.
Made with Metroplex ©2025

Offers Over £475,000

IMPORTANT NOTE: These particulars and the descriptions and measurements herein do not constitute representation and whilst every effort has been made to ensure accuracy, this cannot be guaranteed.

